



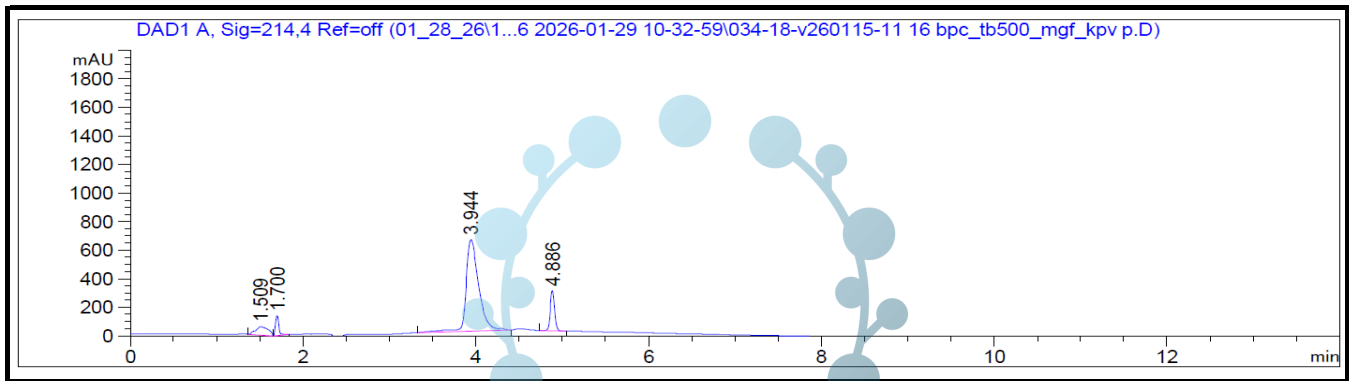
Vanguard Laboratory
 2635 Parkmont Ln
 Olympia, Wa 98502
 360-967-7010

Certificate of Analysis

BPC Wolverine + KPV 10 mg/2.5 mg/1 mg/1 mg

Report To:
Olympia Peptides

Compound: BPC Wolverine + KPV
 Quantity: 10 mg/2.5 mg/1 mg/1 mg
 Laboratory ID: V260115-11 016
 Lot Number: BWOL+MK012026-10
 Date Reported: 1/30/2026



Analysis	Method	Result
Chromatographic Purity	HPLC-UV/VIS	>99.00%
Quantity: BPC-157	HPLC-UV/VIS	10.77 mg
Quantity: TB-500	HPLC-UV/VIS	3.00 mg
Quantity: KPV	HPLC-UV/VIS	0.98 mg
Quantity: MGF	HPLC-UV/VIS	1.02 mg

Report By: Dustin Newman, Laboratory Director on 1/30/2026

Approved By: Tori Johnson, Operations Manager on 1/30/2026



Please consult A2LA Certificate #6377.01.01 for a list of accredited tests. Samples were received in acceptable condition. The result(s) in this report relate only to the portion of the sample(s) tested. All analyses were performed consistent with the Vanguard Laboratory Quality Management System. Vanguard Laboratory and its staff did not observe or participate in the sample selection process, and cannot confirm the authenticity of the sample or its representativeness of the associated lot/batch. Purity method specifications: Result is within + 0.18%.